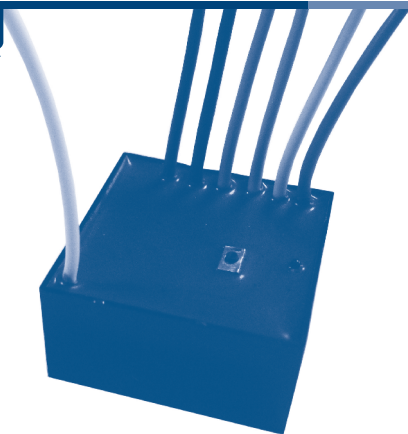


# CHERUBINI

tocco italiano dal 1947



## A510036 RX MINI

CENTRALINA PER TENDE DA SOLE  
E AVVOLGIBILI CON RICEVITORE RADIO



RADIO RECEIVER FOR  
ROLLING SHUTTERS AND AWNINGS



FUNKEMPFÄNGER FÜR  
ROLLLÄDEN UND MARKISEN



RÉCEPTEUR RADIO POUR  
VOLETS ROULANTS ET STORES



CUADRO DE MANIOBRAS PARA PERSIANAS Y  
TOLDOS CON RECEPTOR RADIO INCORPORADO



ISTRUZIONI - INSTRUCTIONS - EINSTELLANLEITUNGEN  
INSTRUCTIONS - INSTRUCCIONES



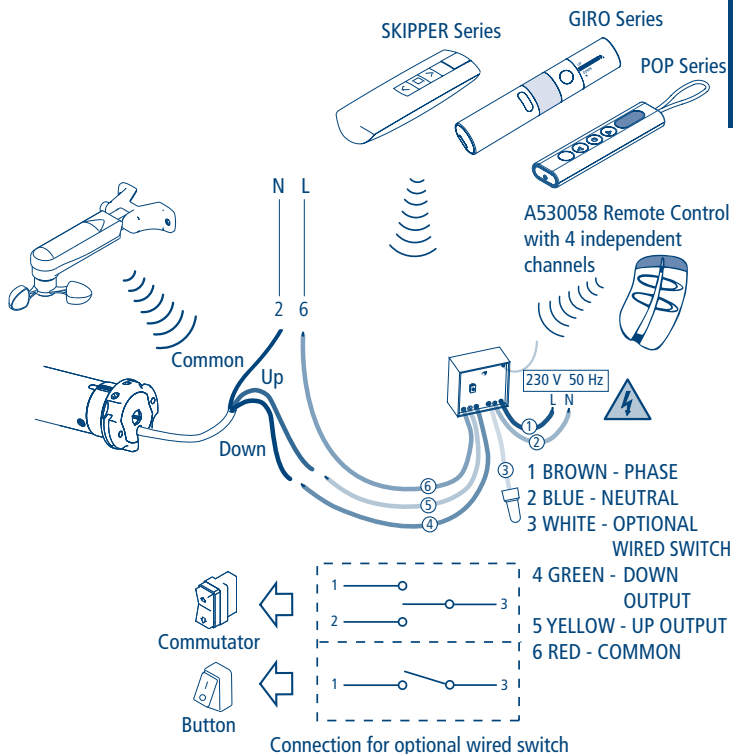
## Table of contents:

Safety instructions .....	p. 21
Electrical connections MINI RX Ref. A510036 .....	p. 21
Key to symbols .....	p. 22
Technical features .....	p. 22
Command sequences example .....	p. 23
Function open/close programming remote control .....	p. 24-25
Setting the first remote control (Skipper, Giro or POP Series) .....	p. 26
Automatic disabling of the first remote control setting function .....	p. 26
Setting the rotation direction of the motor .....	p. 26
Setting of additional remote controls (Skipper, Giro or POP Series) .....	p. 27
Programming the A530058 remote control with 4 independent channels .....	p. 27
Remote control memory clearing .....	p. 28
Full memory clearing .....	p. 28
Activation by remote control .....	p. 29
Optional wired switch .....	p. 30
Change mode from DM to MC and vice versa .....	p. 30-31
Operation with sun/wind sensor .....	p. 32
<b>Compatible devices</b>	
Mistral sensor .....	p. 33
Rugiada .....	p. 34
Anemometers .....	p. 34
Enable/disable the sun sensor .....	p. 35
Test mode for WindTec/WindTec Lux .....	p. 35
<b>Special functions:</b> short-term setting of a remote control .....	p. 36
EU Declaration of conformity .....	p. 36

## SAFETY INSTRUCTIONS

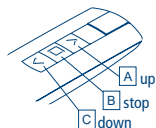
- Only professional technicians must perform installation, complying with all safety instructions, especially those regarding electrical connections.
- To avoid short circuits, arrange an automatic bipolar switch with opening distance of the contacts of at least 3 mm before the circuit.
- If not used, the white wire must be insulated. It is dangerous to touch the white wire when the motor is powered.

## ELECTRICAL CONNECTIONS MINI RX Ref. A510036

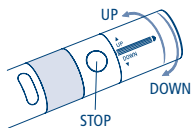
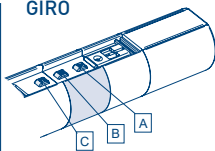


## KEY TO SYMBOLS

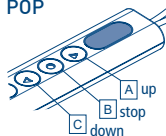
### SKIPPER



### GIRO



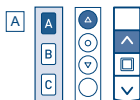
### POP



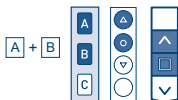
### A530058 Remote Control with 4 independent channels



Button or commutator, wired



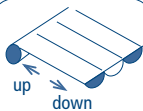
Press button A



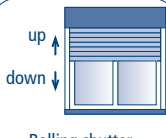
Press buttons A and B at the same time



Press button SET



Awning



Rolling shutter



Led



Disconnect the power supply



Power up

## TECHNICAL FEATURES



short motor rotation in one direction



long motor rotation in the other direction



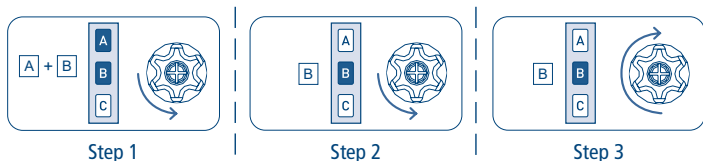
double short rotation

- Power supply 230 V / 50 Hz
- Power consumption 0,5 W
- Radio Frequency 433,92 MHz
- Decoder System Rolling Code
- Modulation AM/ASK
- Max. number storable transmitters 15
- Max. motor power 300 W
- Operating temperature -10 C° +55 C°
- Dimensions 40x40x20 mm
- Weight 80 gr
- Protection degree IP44

## COMMAND SEQUENCES EXAMPLE

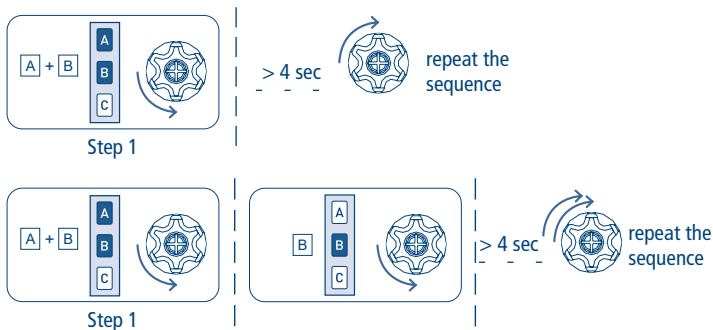
Most of the command sequences have three distinct steps, at the end of which the motor indicates if the step has been concluded positively or not, by turning in different ways. This section is provided to demonstrate the motor indications. The buttons must be pressed as shown in the sequence, without taking more than 4 seconds between one step and the next. If more than 4 seconds are taken, the command is not accepted and the sequence must be repeated.

Command sequence example:



As we can see from the example, when the sequence ends positively, the motor returns to its starting position in one long rotation. In fact, two short rotations in the same direction correspond to one long rotation in the opposite direction. The motor returns to the starting position even when the sequence is not completed; in this case by performing one or two short rotations.

Example of a wrong sequence:



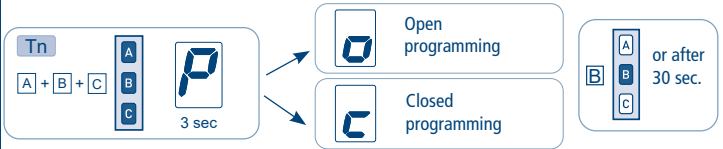
# FUNCTION OPEN/CLOSE PROGRAMMING

## REMOTE CONTROL SKIPPER PLUS - SKIPPER LUX - SKIPPER P-LUX

## REMOTE CONTROL POP PLUS - POP LUX - POP P-LUX

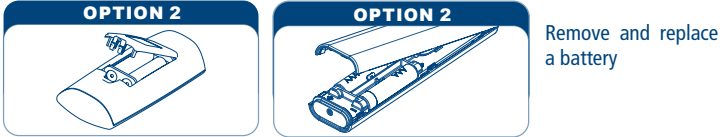
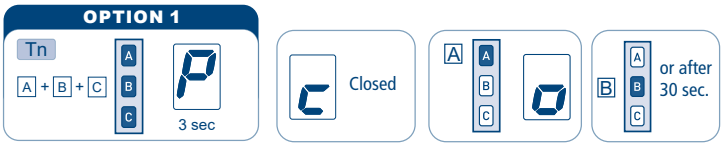
To prevent accidental changes to the programming of the motor during the daily use of the remote control, the possibility of programming is disabled automatically 8 hours after sending the last sequence (A+B or B+C).

### CHECKING THE STATUS OF THE FUNCTION



To change the status of the function, see the sequences "ENABLE/DISABLE PROGRAMMING".

### ENABLE PROGRAMMING



Proceed with programming as the instructions booklet.

### DISABLE PROGRAMMING

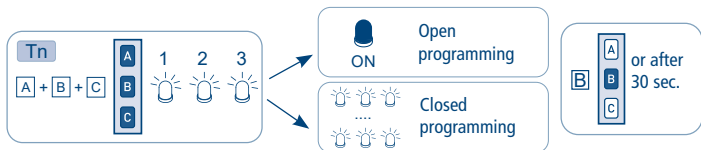


## FUNCTION OPEN/CLOSE PROGRAMMING

### REMOTE CONTROL SKIPPER - SERIES GIRO - REMOTE CONTROL POP

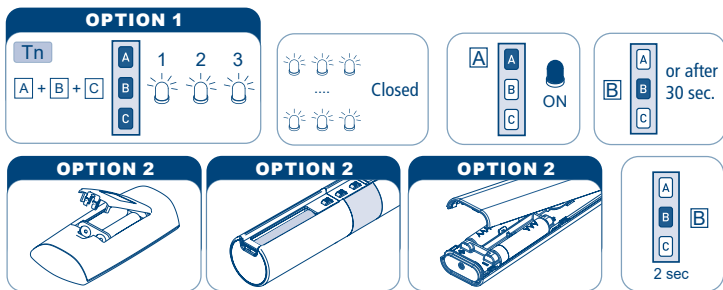
To prevent accidental changes to the programming of the motor during the daily use of the remote control, the possibility of programming is disabled automatically 8 hours after sending the last sequence (A+B or B+C).

#### CHECKING THE STATUS OF THE FUNCTION



To change the status of the function, see the sequences "ENABLE/DISABLE PROGRAMMING".

#### ENABLE PROGRAMMING



Remove one battery and wait minimum 5 seconds or press any button.

Proceed with programming as the instructions booklet.

#### DISABLE PROGRAMMING



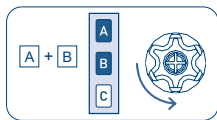


## SETTING THE FIRST REMOTE CONTROL (Skipper, Giro or POP Series)

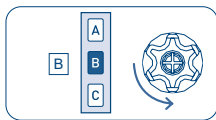
This operation can only be performed when the control unit is new, or after a total delete of the memory.

**During this step, power up only one control unit at time!**

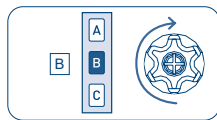
T1: First remote control to be set



T1



T1



T1 (2 sec)

### AUTOMATIC DISABLING OF THE FIRST REMOTE CONTROL SETTING FUNCTION

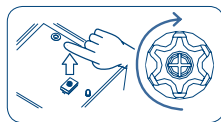
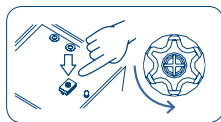
Every time you connect the power supply to the control unit, you have 3 hours to store the first remote control. After this time, the ability to store the remote control is disabled. To reset the timer of the function you have to disconnect and reconnect the power supply to the control unit.

## SETTING THE ROTATION DIRECTION OF THE MOTOR

This operation is mandatory if the rotation direction of the motor does not match to the UP and DOWN functions of the remote control as an exemple if giving UP command the awning or blinds descend.

The proper motor direction must be set, if the motor is linked to a Wind sensor. In case of a wind alarm, the motor will always perform the command associated to the UP button.

Setting the rotation direction using the SET button:



max. 2 sec

Interchanging the **BROWN** and **BLACK** motor wire on the terminals of the control unit, will also reverse the rotation direction.

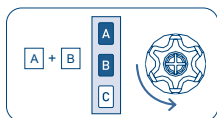
**The control unit will keep this setting even after complete memory clearing.**

## SETTING OF ADDITIONAL REMOTE CONTROLS (Skipper, Giro or POP Series)

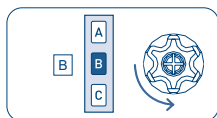
Up to 15 remote controls can be set, including the light/wind sensor.

Tn: Already programmed remote control

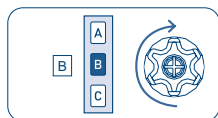
Tx: Additional remote control



Tn



Tn



Tx (2 sec)

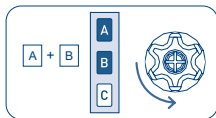
## SETTING THE A530058 REMOTE CONTROL WITH 4 INDEPENDENT CHANNELS

The A530058 remote control must be set from another Skipper, Giro or POP Series remote control that has already been programmed.

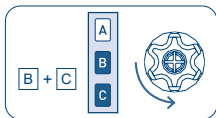
- Press the A and B buttons at the same time.
- The motor makes a short movement.
- Then press the B and C buttons at the same time.
- The motor makes a short movement again.
- Then, press the desired button on the A530058 remote control for at least 2 seconds.
- The motor makes a long movement.

Tn: Already programmed remote control

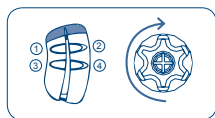
Tx: Additional remote control



Tn



Tn

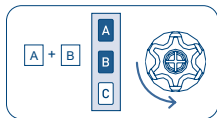


Tx (2 sec)

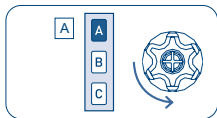
## REMOTE CONTROL MEMORY CLEARING

It is possible to delete singly all the memorized remote controls. When the last one is deleted the control unit initial condition is restored. The same applies to the single channels of a multichannel remote control: just select the channel to cancel.

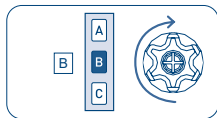
Tn: Remote control to be cleared



Tn



Tn



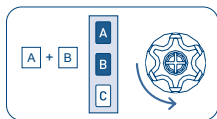
Tn (2 sec)

## FULL MEMORY CLEARING

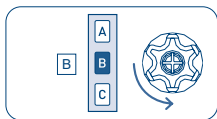
The full memory clearing can be performed in two ways:

1) WITH THE REMOTE CONTROL (Skipper, Giro or POP Series)

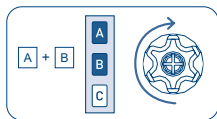
Tn: Already programmed remote control



Tn

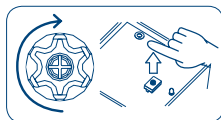
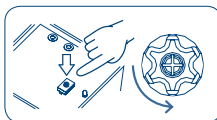


Tn



Tn (4 sec)

2) WITH THE SET BUTTON

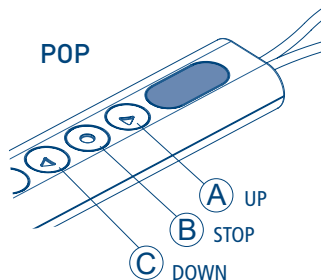
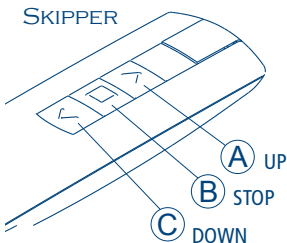


approximately 8 sec

## ACTIVATION BY REMOTE CONTROL

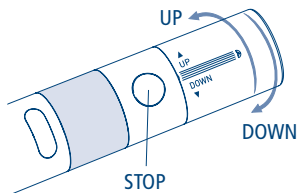
### Skipper or POP Series remote control

- Button A controls Up;
- Button B interrupts the command;
- Button C controls Down.



### Giro Series remote control

- Turning to wards UP control the ascent;
- Button STOP interrupts the command;
- Turning to wards DOWN control the descent.



### A530058 Remote Control with 4 independent channels

Each time the associated button is pressed the up and down outputs are activated in the sequence shown:



- 1 Up
- 2 Stop
- 3 Down
- 4 Stop

## OPTIONAL WIRED SWITCH

In addition to the remote control, it is possible to control motor start and stop with a commutator or a button, connected to the optional wired switch (white wire).

The control unit may be programmed to operate with commutators and buttons in "dead man mode" (DM) or "latching mode" (MC).

### DM - DEAD MAN MODE

The up and down controls remain active as long as the contact is closed, in any case complying with the 3 minute time-out. To stop the motor set the commutator to Stop.

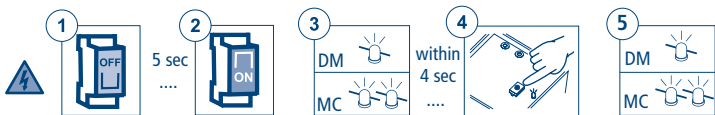
### MC - LATCHING MODE

A short up or down impulse is enough to activate the outputs with the time-out set at 3 minutes. To stop the motor, press up or down again.

### MODE CHANGE FROM DM TO MC AND VICE VERSA

The control unit is set at the factory for the DM mode. To change from the DM Mode to the MC Mode, do the following:

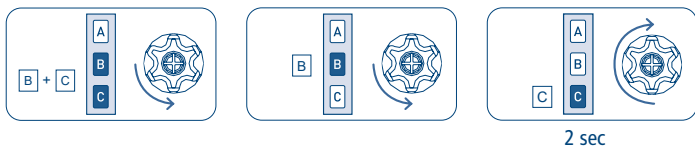
- 1) Disconnect the power, and wait at least 5 seconds.
- 2) Reconnect the power.
- 3) Stand by for the Led signal that indicates the current mode:
  - 1 impulse for the DM Mode.
  - 2 impulses for the MC Mode.
- 4) Within 4 seconds press the SET button: the Led shows the new mode with the relative number of impulses.



MODE CHANGE		
	DM	MC
 BUTTON (step-by-step)	NO	✓
 COMMUTATOR (Up/Down)	✓	✓

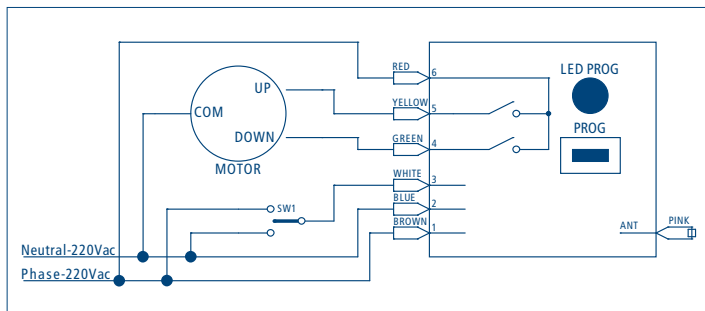
If a commutator is connected, the control unit is automatically set for use of the up/down controls.

If you then replace the switch with a button, to return to the step-by-step mode run the following sequence.



### Wired control with up/down commutator

Connect the commutator common to the optional wired switch (white wire) input and one of the two commutation terminals to the Phase and the other one to the Neutral of the power supply.



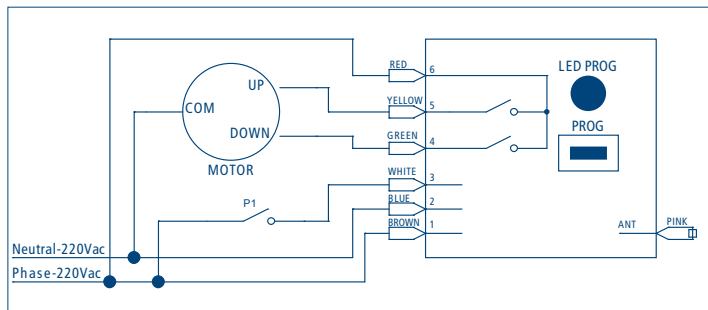
Remote and wired control of the motor with up/down commutator

## Wired control with button

In this setup it is not possible to use the DM mode.

Set the control unit to the latching mode (MC) and connect the button between Phase and the input of the optional wired switch (white wire).

Each time the button is pressed the control unit works in step-by-step mode: up-stop-down-stop.



Remote and wired control of the motor with step-by-step button

## OPERATION WITH SUN/WIND SENSOR

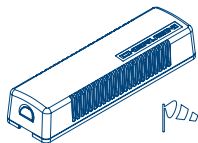
It is possible to associate a wind or sun/wind sensor with the control unit. In correspondence to climatic events, the appearance or disappearance of the sun and/or with a wind alarm, the control unit performs the following operations:

Event	Automatic movement
Appearance of the sun (sunlight over threshold level)	3 minutes after the sun comes out, the awning opens completely.
Disappearance of the sun (sunlight under threshold level)	10 minutes after the sun disappears, the awning closes completely.
Wind alarm (wind over the threshold speed)	After 2 seconds, the awning closes completely. It is not possible to open it until 8 minutes have passed with the wind under the threshold speed. The red Led flashes.

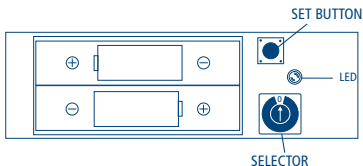
## COMPATIBLE DEVICES

### MISTRAL SENSOR

It detects movements caused by the wind on the awning arms.

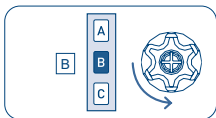
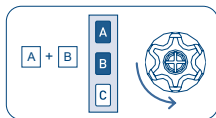


MISTRAL- Ref. A520012



### SETTING THE SENSOR

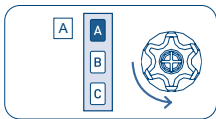
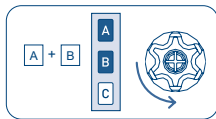
To associate the sensor to the control unit, a remote control must be already memorized. Set the selector to the 0 position and then perform this sequence:



2 sec

### DELETING THE SENSOR

To delete the sensor from the control unit, an already programmed remote control must be used. Set the selector to the 0 position; if active wait for the sensor to go off and then perform this sequence:

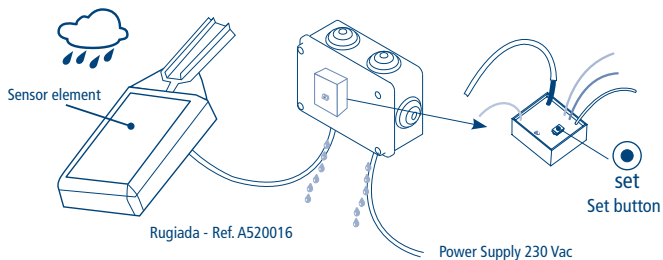


2 sec

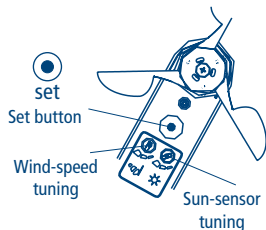
For the complete description of the functions of this device see the instruction booklet that came in the box.



## RUGIADA (TX RAIN-SENSOR)

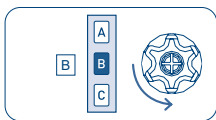
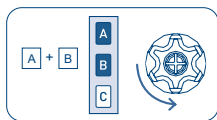


## ANEMOMETERS



## SETTING

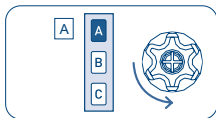
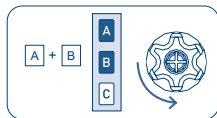
To associate the sensor to the control unit, a remote control must be already memorised. The setting sequence is the following:



2 sec

## DELETING

To delete the sensor from the control unit, an already programmed remote control must be used. The deleting sequence is the following:



2 sec

For the complete description of the functions of these devices see the instruction booklet that came in the box.

## ENABLE / DISABLE THE SUN SENSOR

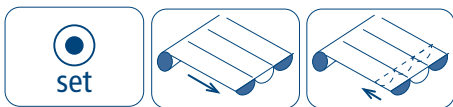
(WindTec Lux)

To enable (automatically) or disable (manually) the sun sensor refer to the instruction manual provided with the sensor or the remote control you want to use.

## TEST MODE FOR WINDTEC/WINDTEC LUX

This function is useful to check the correct communication via radio, and perform the wind and sun function test.

To activate the TEST function, hold the SET button down for around 2 seconds, until the awning opens for 10 seconds and closes briefly to confirm that the test mode is activated. The Test function lasts for 3 minutes, during which the wind and light level settings can be checked, without waiting for the activation times. After 3 minutes, the WindTec sensor returns to normal mode function. During the wind-alarm the red led inside the control unit is on.



2 sec

### WIND FUNCTION TEST (WINDTEC, WINDTEC LUX)

To avoid errors during the wind function test, it is suggested that the sunlight function be deactivated. By spinning the anemometer fins, when the speed detected by the sensor exceeds the threshold set, the motor will close completely the awning.

### SUN FUNCTION TEST (WINDTEC LUX)

Make sure that the sunlight function is on. When the sensor detects a change in the sunlight intensity, it opens the awning if brighter than the set point or closes it if weaker. This test can be repeated several times to establish the desired automatic opening and closing level according to the light.

## SPECIAL FUNCTIONS

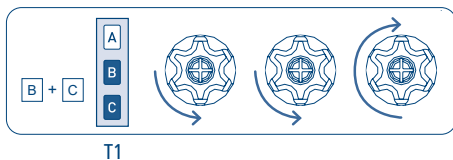
### SHORT-TERM SETTING OF A REMOTE CONTROL

This function makes it possible to store a remote control temporarily, for example, with the purpose of setting the limit switches during assembly in the factory. A later final saving of the remote control will be possible using the appropriate command sequence (see: "SETTING THE FIRST REMOTE CONTROL"). The operations described below can be carried out only when the control unit has just come out of the factory or after a full memory clearing (see: "FULL MEMORY CLEARING"). The control unit makes the following operations possible only within the time limits described in order to make sure that the short-term setting is used only in the installation or factory setting phase and not during daily use. Power up the control unit, make sure that no other control units having an empty memory are powered up in the same operating range.

**Within 30 seconds after start**, press the B and C buttons simultaneously until the motor gives a confirmation signal.

**The remote control will remain stored for 5 minutes**, while the control unit is powered up. After 5 minutes or when the control unit has its power cut off, the remote control will be cancelled.

T1: First remote control to be set



## EU DECLARATION OF CONFORMITY

CHERUBINI S.p.A. declares that the product is in conformity with the relevant Union harmonisation legislation:

Directive 2014/53/EU, Directive 2011/65/EU.

The full text of the EU declaration of conformity is available upon request at the following website: [www.cherubini.it](http://www.cherubini.it).



**CHERUBINI S.p.A.**

Via Adige 55  
25081 Bedizzole (BS) - Italy  
Tel. +39 030 6872.039 | Fax +39 030 6872.040  
info@cherubini.it | www.cherubini.it

**CHERUBINI Iberia S.L.**

Avda. Unión Europea 11-H  
Apdo. 283 - P. I. El Castillo  
03630 Sax Alicante - Spain  
Tel. +34 (0) 966 967 504 | Fax +34 (0) 966 967 505  
info@cherubini.es | www.cherubini.es

**CHERUBINI France S.a.r.l.**

ZI Du Mas Barbet  
165 Impasse Ampère  
30600 Vauvert - France  
Tél. +33 (0) 466 77 88 58 | Fax +33 (0) 466 77 92 32  
info@cherubini.fr | www.cherubini.fr

**CHERUBINI Deutschland GmbH**

Siemensstrasse, 40 - 53121 Bonn - Deutschland  
Tel. +49 (0) 228 962 976 34 / 35 | Fax +49 (0) 228 962 976 36  
info@cherubini-group.de | www.cherubini-group.de

